

# PREFABRICATED CABIN WET UNIT



SEJIN Technical Industries Co., Ltd.

**Head office / Factory / Warehouse**

15, Eogokgongdan 5-gil, Yangsan-si, Gyeongnam(50591), Korea.  
Tel. +82-55-782-1180 Fax. +82-55-782-1001  
E-Mail : [marketing@sejintec.co.kr](mailto:marketing@sejintec.co.kr)  
[www.sejintec.co.kr](http://www.sejintec.co.kr)

Revision Date : Jan.2021





# Challenge towards the Top

Craftsmen to the world's finest ships and Offshore Modules.  
Leading company in the maritime field in Korea since 1988.



## CONTENTS

### ■ PREFABRICATED CABIN

- P. 05 NORSOK STANDARD
- P. 07 CABIN LAYOUT

### ■ PREFABRICATED WET UNIT

- P. 11 BATHTUB UNIT
- P. 13 SHOWER UNIT

### ■ PREFABRICATION PROCESS

- P. 15 PREFABRICATION PROCESS

### ■ INSTALLATION

- P. 17 INSTALLATION

### ■ REFERENCE

- P. 19 REFERENCE

### ■ QHSE

- P. 25 QHSE

### ■ CONTACT US

- P. 27 CONTACT US



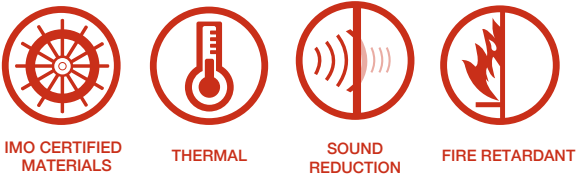


# PREFABRICATED CABIN



## Complying to the NORSOK Standard

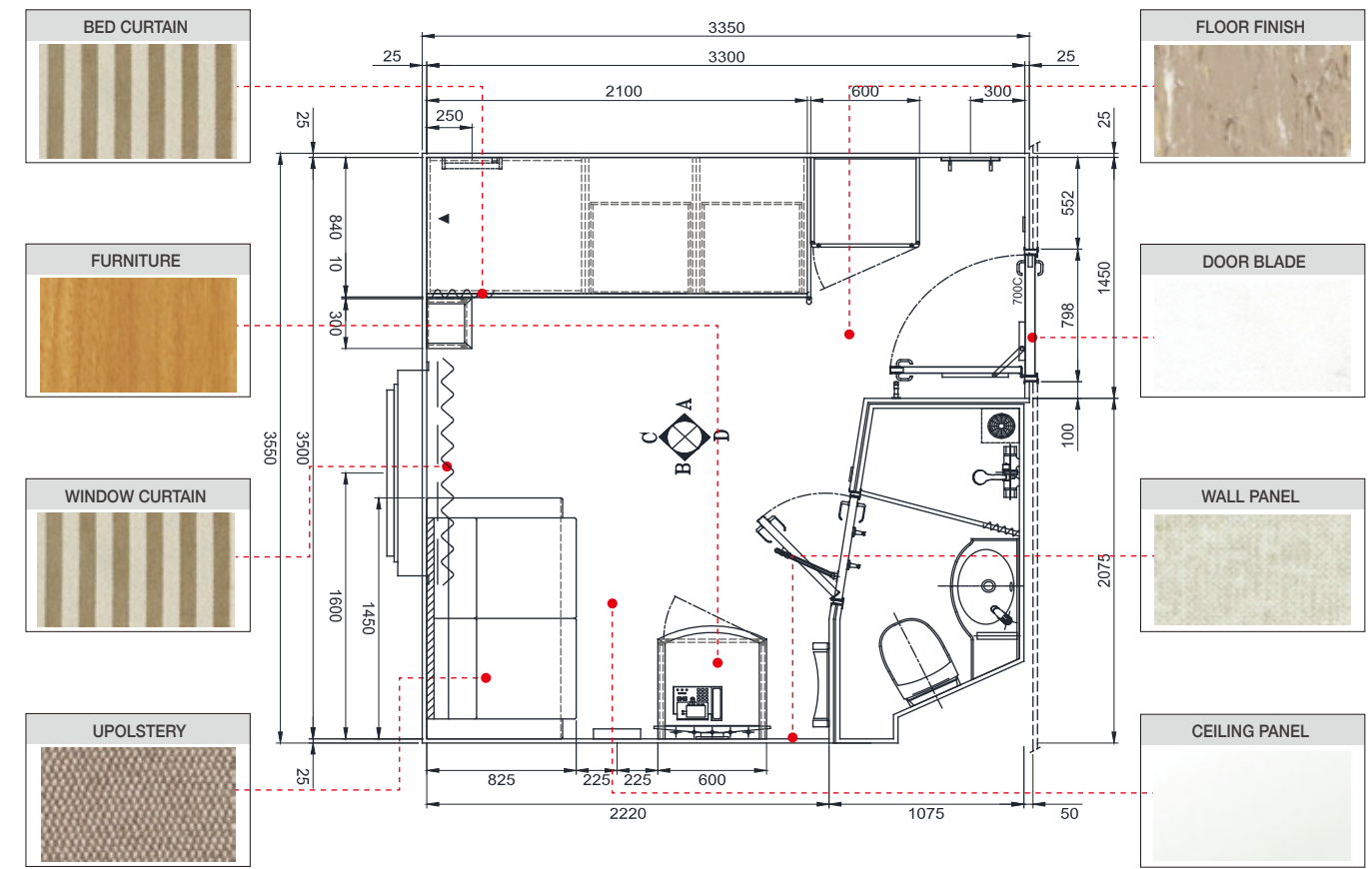
SEJIN produces top quality Prefabricated Cabins which satisfy the NORSOK Standard. It also has excellent sound absorption and protection stability, so it has a large share in domestic and overseas markets. SEJIN manufactures and produces the highest quality Prefabricated Cabins for our customers.



Prefabricated Cabin



Wet Unit





# NORSOK STANDARD

## To satisfy NORSOK Standards

SEJIN is producing top quality Prefabricated Cabins that satisfy NORSOK Standards.  
SEJIN manufactures and produces the best quality Cabins and for delivery to customers.



### NORSOK

ITEM	NORSOK STANDARD			ARTICLE
PREFABRICATED WET UNIT	C-002 (ARCHITECTURAL COMPONENTS AND EQUIPMENT)	17.2	FLOOR	FABRICATED AS ONE WATERTIGHT JOINT LESS UNIT OF STAINLESS STEEL, ALUMINIUM OR OTHER NON-CORRO-SIVE MATERIAL.
		17.3	WALL	SEAMLESS AND GENTLE RADIUS WALL PANEL.
		17.11	FLOOR ELECTRICAL HEAT	SHALL BE POSSIBLE TO REPLACE DAMAGED CABLES EASILY DURING THE OPERATIONAL PHASE WITHOUT DISMANTLING THE BATHROOM UNIT.
FURNITURE, EQUIPMENT AND ACCESSORIES	C-002 (ARCHITECTURAL COMPONENTS AND EQUIPMENT)	20.1	GENERAL REQUIREMENTS	EASY TO CLEAN, WITHOUT COMPLICATED JUNCTIONS AND RECESSES OR NICHES. DUST TRAPS ARE AVOIDED.
WORKING ENVIRONMENT REQUIREMENTS	S-002 (WORKING ENVIRONMENT)	5.5.3	OTHER ACOUSTIC REQUIREMENTS	WALL PANEL (CABIN TO CABIN) R'w 45dB = Rw 45dB + 5dB [C002] + 3dB [S002] DOOR (CABIN TO CORRIDOR) R'w 40dB = Rw 40dB + 5dB [C002] + 3dB [S002]

## PREFABRICATED CABIN

NORSOK STANDARD CABIN LAYOUT

## Provides stability that satisfies NORSOK Standard



## REFERENCE

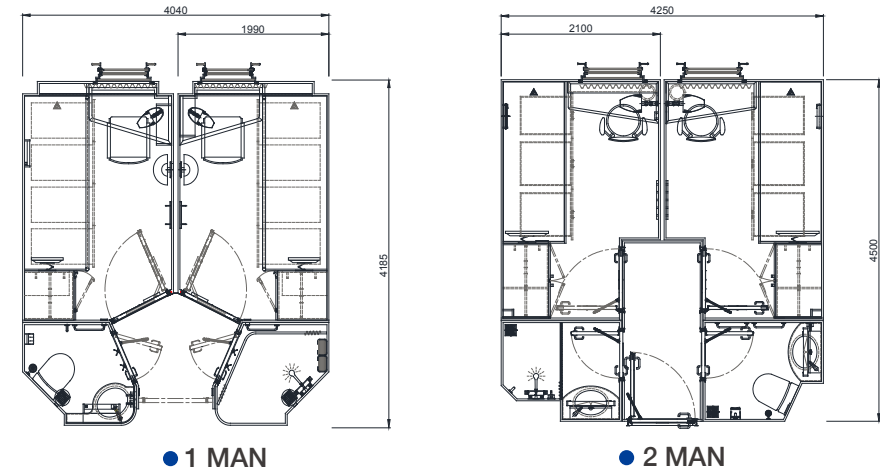
Updated on JAN.2021

OWNER	TYPE	CLASS	SHIPYARD	Quantity of SET
WEIDONG FERRY (KOREA)	RO-PAX	KR	HYUNDAI MIPO DOCKYARD CO., LTD. (KOREA)	134 SET
EDDA (KOREA)	ACCOMM VESSEL	DNV.GL COMF V(1)	HYUNDAI HEAVY IND. CO., LTD. (KOREA)	406 SET
MAERSK DRILLING (DENMARK)	JACK-UP RIG	DNV.GL (NORSOK)	DAEWOO SHIPBUILDING & MARINE ENGINEERING CO., LTD. (KOREA)	180 SET
TOTAL (FRANCE)	FPU	BV	HYUNDAI SAMHO HEAVY IND. CO., LTD. (KOREA)	225 SET
SEADRILL (NORWAY)	SEMI-RIG	DNV.GL (NORSOK)	HYUNDAI SAMHO HEAVY IND. CO., LTD. (KOREA)	150 SET
FRED OLSEN (NORWAY)	SEMI-RIG	DNV.GL (NORSOK)	HYUNDAI HEAVY IND. CO., LTD. (KOREA)	140 SET
NEXEN (UK)	FIXED PLATFORM	DNV.GL	SLP (UK)	70 SET
TOTAL				1,305 SET

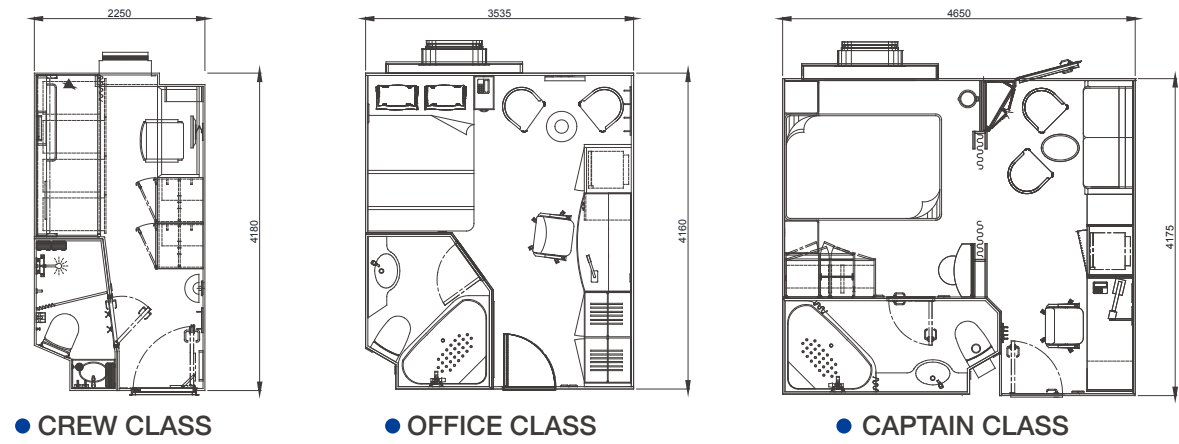


# CABIN LAYOUT

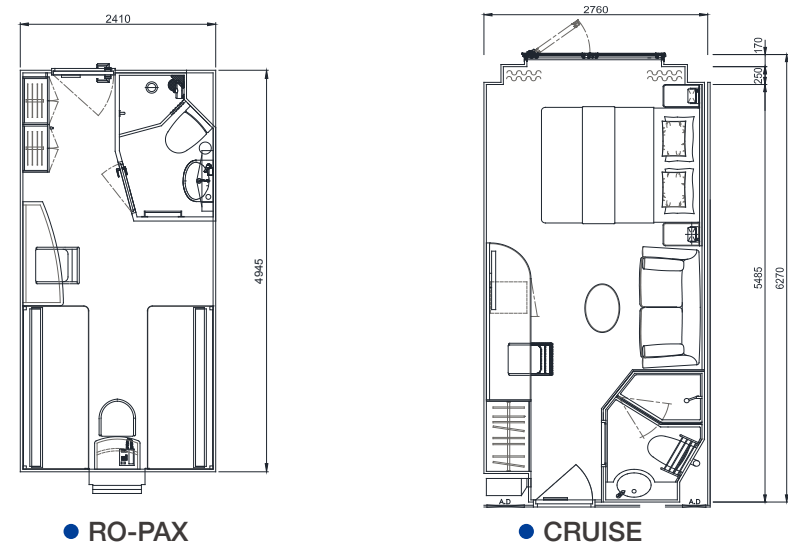
## NORSOK CABIN TYPE



## CREW CABIN TYPE



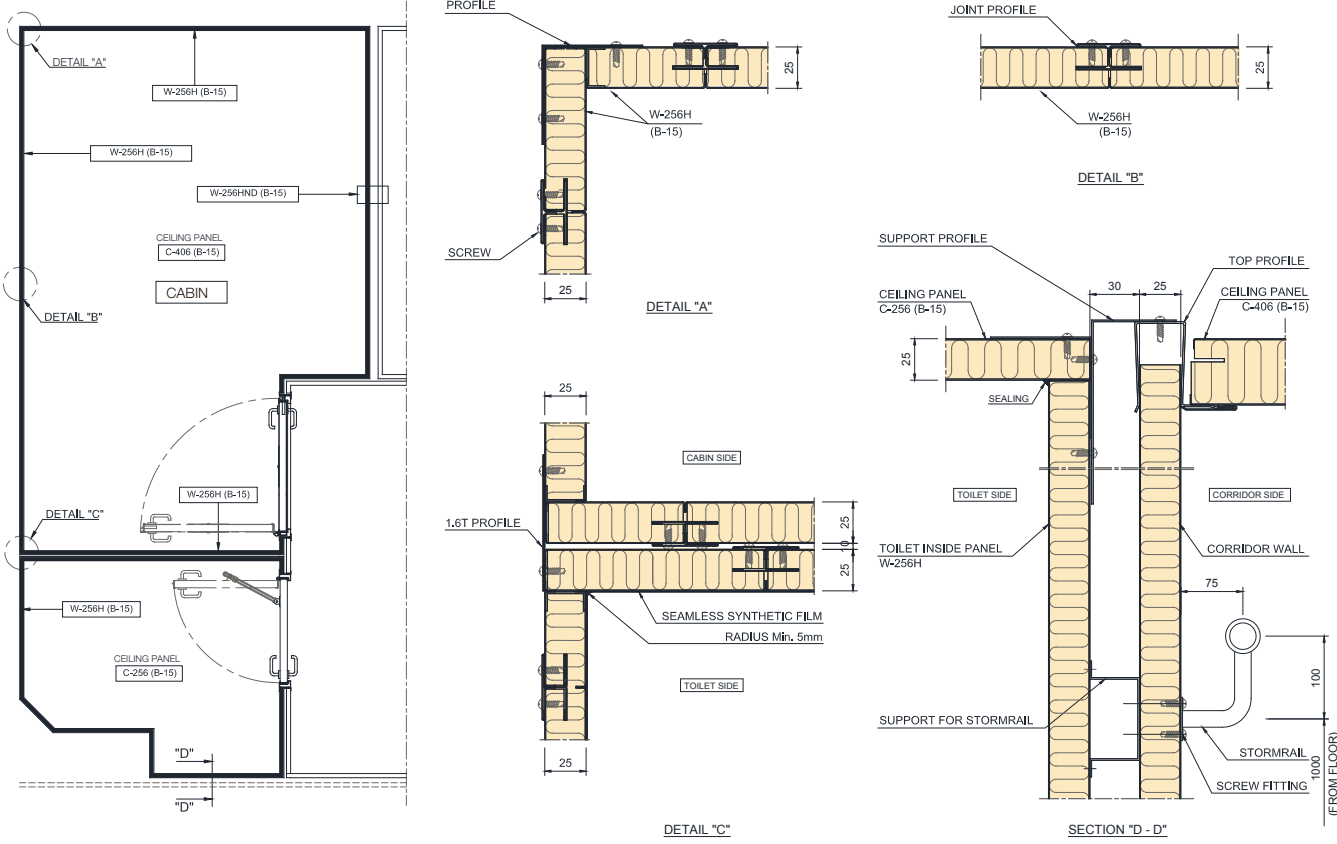
## PASSENGER CABIN TYPE



# PREFABRICATED CABIN

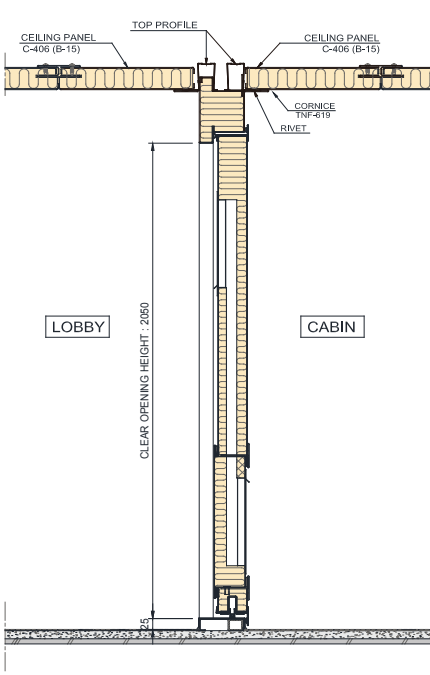
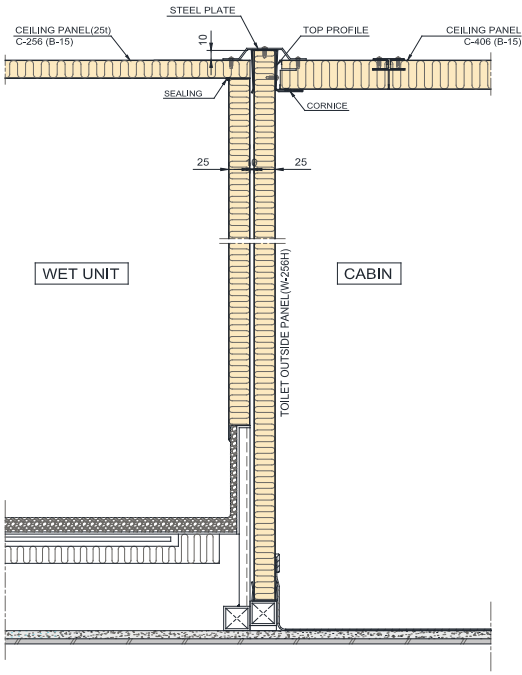
NORSOK STANDARD CABIN LAYOUT

## TYPICAL DRAWING



● LAYOUT PLAN

● TYPICAL CONSTRUCTION



● TYPICAL SECTION BETWEEN CABIN AND WET UNIT

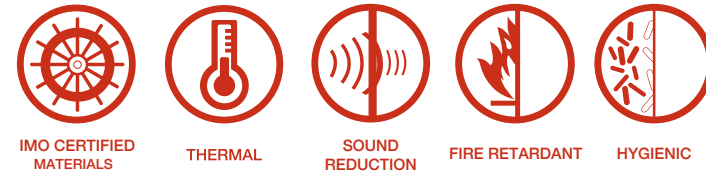
● TYPICAL SECTION BETWEEN CABIN AND LOBBY



# PREFABRICATED WET UNIT



Think of the Wet Unit with fine details and beautiful designs.



## Bathtub Unit



## Shower Unit





# BATHTUB UNIT

## PERSPECTIVE



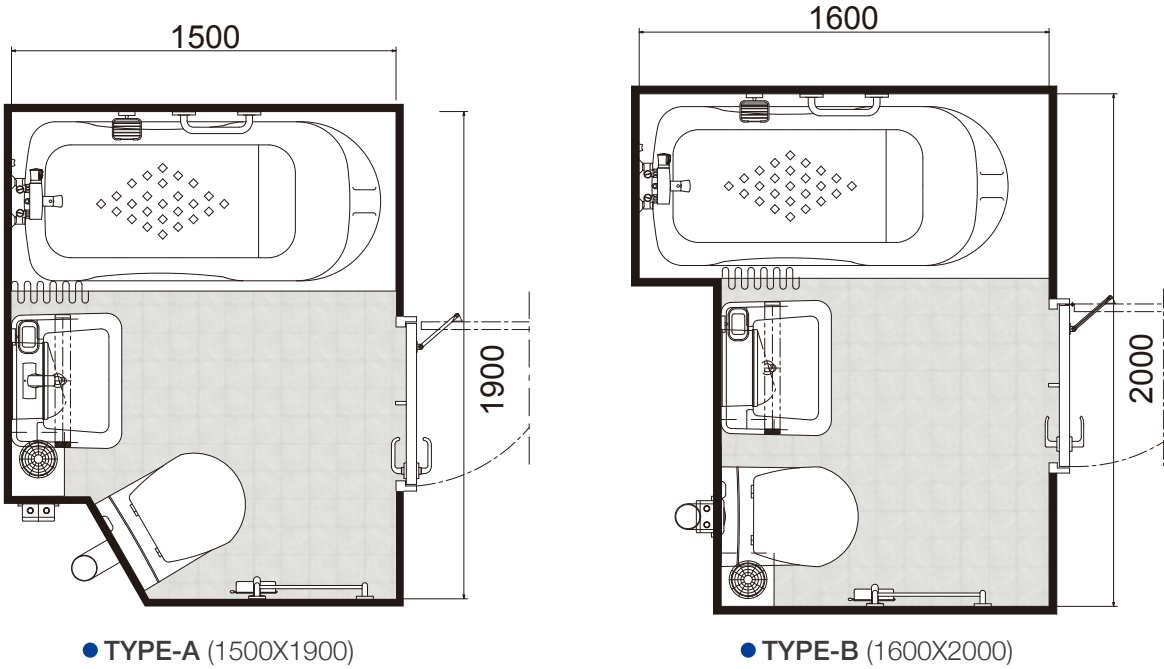
## ISOMETRIC PERSPECTIVE



## PREFABRICATED WET UNIT

BATHUB UNIT    SHOWER UNIT

## ENGINEERING DRAWING



## ACCESSORIES





# SHOWER UNIT

## PERSPECTIVE



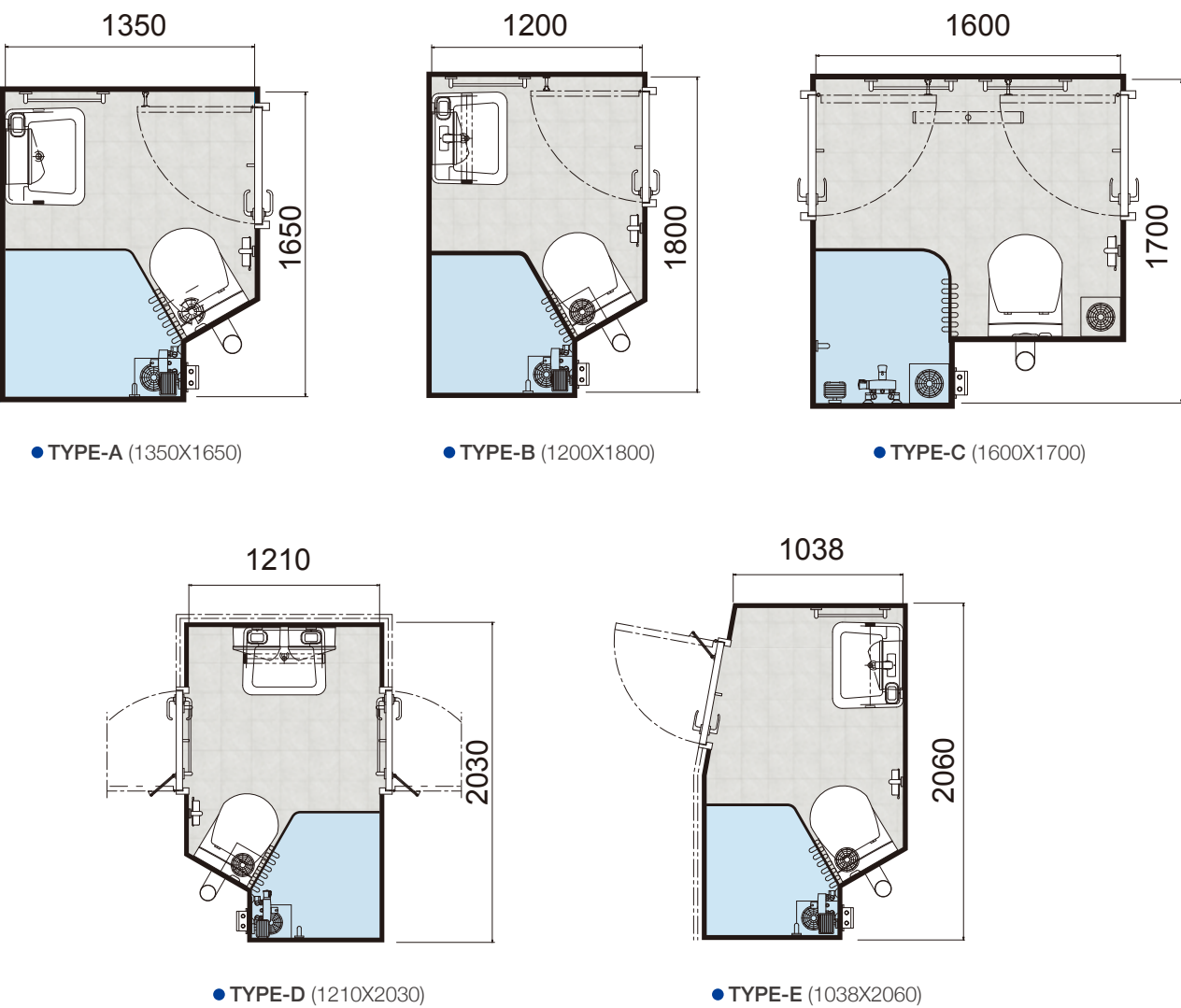
## ISOMETRIC PERSPECTIVE



# PREFABRICATED WET UNIT

BATHUB UNIT **SHOWER UNIT**

## ENGINEERING DRAWING



## ACCESSORIES

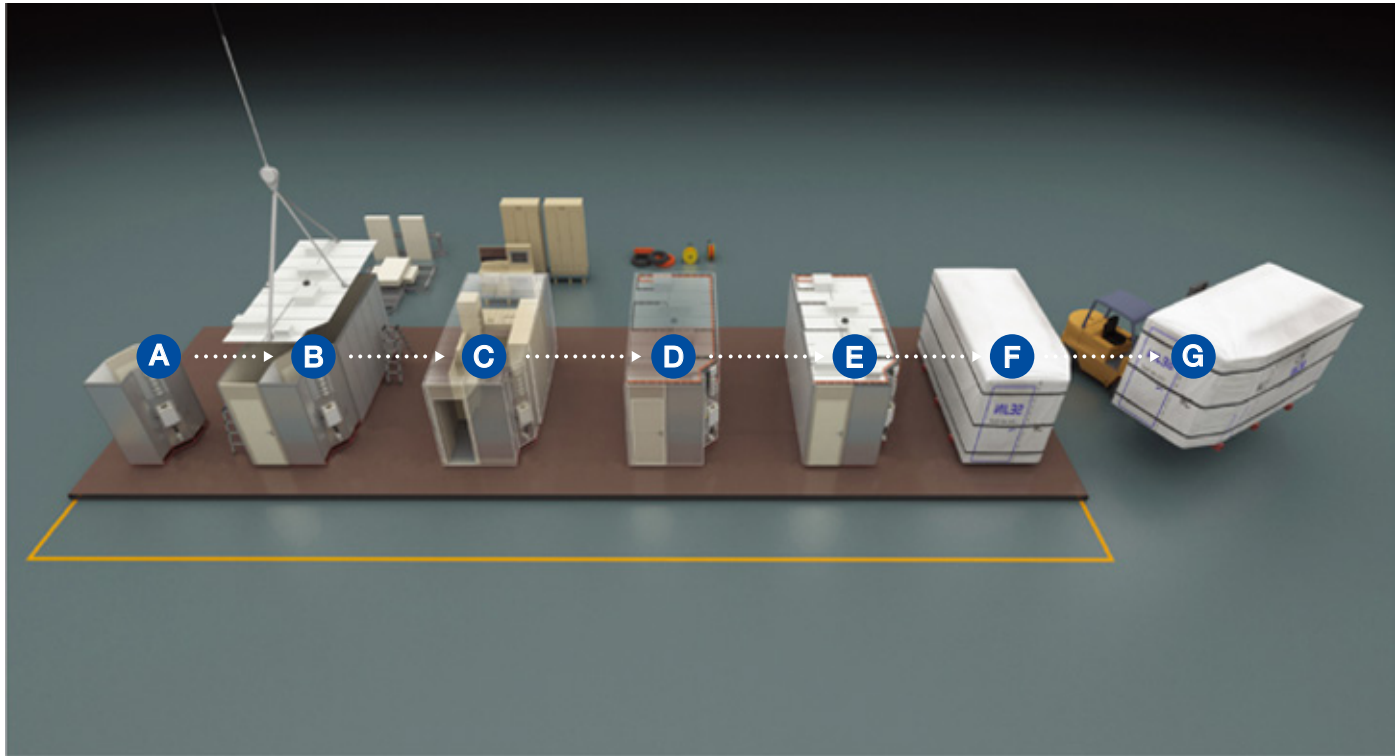




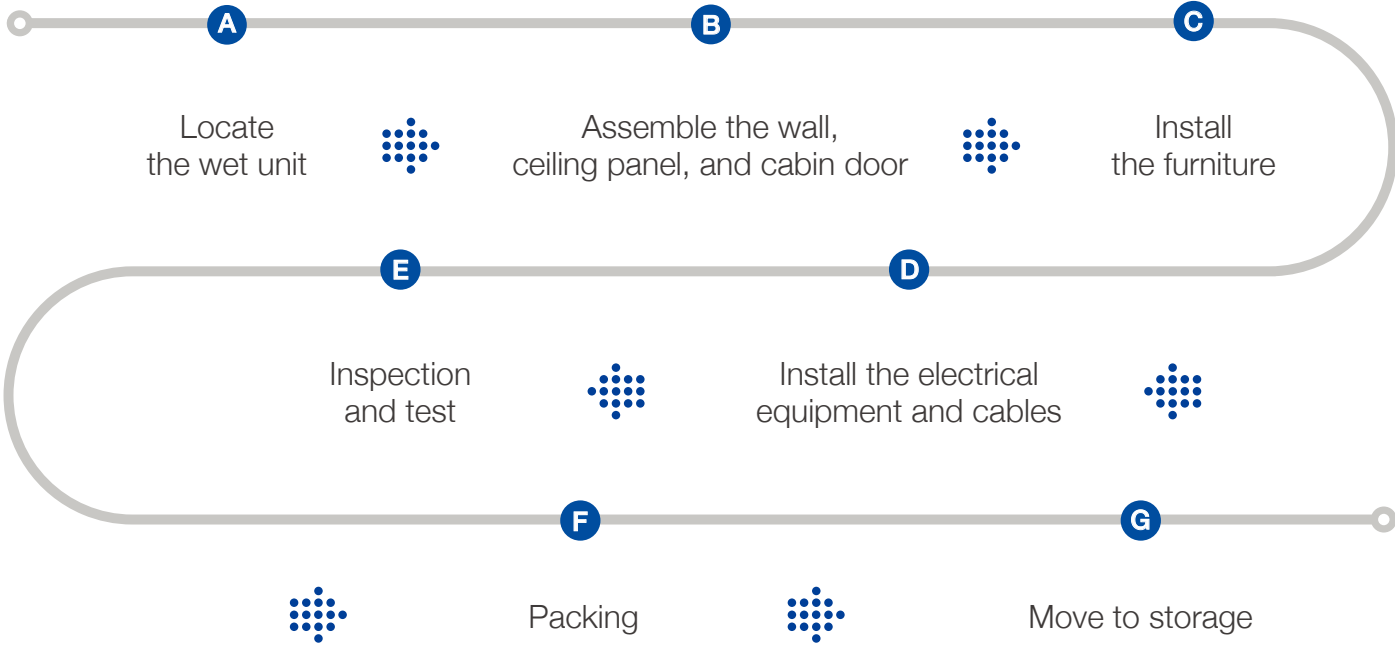
# PREFABRICATION PROCESS

## WORK PROCEDURE

### WORK FLOW



### WORK PROCEDURE OF PREFABRICATION



## Storage and Loading

### STORAGE



#### Suggested storage method for SEJIN Prefabircated Cabins

- To be stored indoors, i.e. warehouse
- To be stored in a dry and clean environment
- To be stored above floor level at least 150 mm
- To be stored by area or cabin number for ease of access or by delivery schedule.

### LOADING



Using proper lifting device, i.e. folk-lift truck, to transfer SEJIN prefabricated cabin. A proper fork-lift truck with long flat forks.The forks should be long enough to extend at least 50mm over the other end of the cabin once the cabin is lifted onto the forklift truck. Fasten the prefabricated cabin onto the truck with belt or robe to stabilize the unit. Do not climb on to the top of the unit during fastening.



# INSTALLATION

## 01 Storage

Suggested storage methods for SEJIN Prefabricated Cabins

- To be stored indoors, i.e. warehouse
- To be stored in a dry and clean environment
- To be stored above floor level at least 150mm
- To be stored by area or cabin number for ease of access or by delivery schedule.



## 02 Loading

Using proper lifting device, i.e. fork-lift truck, to transfer SEJIN prefabricated cabin.

A proper fork-lift truck with long flat forks.

The forks should be long enough to extend at least 50mm over the other end of the cabin once the cabin is lifted onto the forklift truck. Fasten the prefabricated cabin on to the truck with belt or rope to stabilize the unit. Do not climb on to the top of the unit during fastening.



## 03 Clean the site before Assemble

Clean the site where assemble will occur. Make sure enough space and height are reserved for free movement. Remove all unnecessary objects from the site before cabin installation.

The following works are to be finished before installation:  
(Insulation, Main cable installation, Duct, Plumbing, and Window opening)  
Mark the cabin position exactly.



## 04 Lifting

Remove the S.Q tube pallet before lifting.

Clear the lifting site to ensure safe lifting operation.

The prefabricated cabin shall be lifted by means of special lifting device maintaining balance throughout.

The lifting shall be carried out with caution and safety considerations.



## INSTALLATION

## INSTALLATION

## 05 Moving Cabin on to Right Position

Use a transportation device to move cabin to desired location.

During transportation, special care should be taken to support the cabin and prevent collision with other objects. Make sure that the cabin is positioned correctly and check with windows.

Make window opening and window box can be installed.



## 06 Fixing on to Deck

Lay temporary support to start work.

The position of cabin can be adjusted using steel adjustment device.

Tack welding to steel deck.

Fill in fire sealant between deck and cabin base frame to satisfy B-Class construction standards.



## 07 Connection of the Technical System

The piping and the electrical connection shall be made in the service

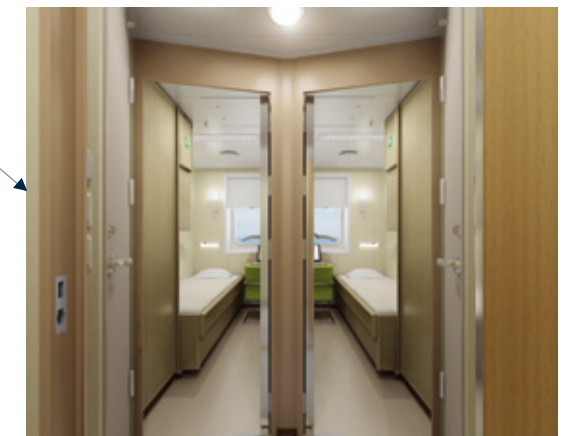


## 08 Finish work & Inspection of Cabin

Place carpet or vinyl on the floor. (include skirt)

Furniture placement, door adjustment and cleaning of the cabin.

Inspect each cabin with the customer according to the FAT procedure





# REFERENCE



## EDDA ACCOMMODATION VESSEL

• SHIP OWNER	EDDA ACCOMMODATION
• SHIP TYPE	ACCOMMODATION VESSEL
• CLASS	DNV.GL
• RULE & REGULATION	DNV.GL COMFORT CLASS V(1)
• SHIP YARD	HHI
• DELIVERY	MAY-2016



# REFERENCE

Reference



## MAERSK JACK-UP RIG

• SHIP OWNER	MAERSK
• SHIP TYPE	JACK-UP RIG
• CLASS	DNV.GL
• RULE & REGULATION	NORSOK STANDARD
• SHIP YARD	DSME
• DELIVERY	JUN-2016





# REFERENCE



## MOHO NORD

• SHIP OWNER	TOTAL
• SHIP TYPE	FPU
• CLASS	BV
• RULE & REGULATION	SOLAS STANDARDS
• SHIP YARD	HSHI
• DELIVERY	AUG-2015



# REFERENCE

Reference



## WEST MIRA

• SHIP OWNER	SEA DRILL
• SHIP TYPE	SEMI-RIG
• CLASS	DNV.GL
• RULE & REGULATION	NORSOK
• SHIP YARD	HSHI
• DELIVERY	APL-2015





# REFERENCE



## BOLLSTA DOLPHIN

• SHIP OWNER	FRED OLSEN
• SHIP TYPE	SEMI-RIG
• CLASS	DNV.GL
• RULE & REGULATION	NORSOK
• SHIP YARD	HHI
• DELIVERY	MAR-2015



# REFERENCE

Reference



## GOLDEN EAGLE

• SHIP OWNER	NEXEN
• SHIP TYPE	FIXED PLATFORM
• CLASS	DNV.GL
• RULE & REGULATION	UKOOA
• SHIP YARD	SLP (UK)
• DELIVERY	FEB-2013





## Q (Quality Management)

SEJIN has always been built around a singular vision: to create every space that is as durable and functional as they are beautiful and intuitive. SEJIN is a stunning realization of that ideal. All the elements that define marine accommodation have been thought and engineered, so SEJIN provides you to meet the vibrant daily life in comfortable space. And all these things were reflected by SEJIN's know-how, originality, and craftsmanship accumulated over many years.



### ■ Quality Management System

SEJIN has defined the core value of quality management as “Customer Satisfaction”. We set up and have been operating a systematic quality management system for continual improvement and innovation.

As the world's leading Total Marine Accommodation turnkey provider, we pursue to create the highest value and share deep trust with our customers.



ISO 9001 : 2015

## HSE (Health, Safety and Environment)

### ■ Our Mission

The Shipbuilding and Offshore industry can have a significant impact on the environment. We recognize our responsibility to contribute to a sustainable development of the industry.



ISO 14001 : 2015

### ■ Zero Incidents.

Health and Safety is at the core of our operations and we strive to maintain our achievement of zero incidents. We do everything possible to ensure the safety of our employees, customers, subcontractors and other parties.

### ■ Practice

Practice sustainable improvement for the environment, health and safety improvements through prevention activities on environmental pollution, injury and accident, occupational diseases

### ■ Customer Satisfaction

Customer Satisfaction is our top priority. Leveraging our top-notch technology capabilities and human resources, extensive experience, and know-how, we go to great lengths to deliver a higher level of Satisfaction to our customers. Our rich history of accomplishments made throughout the world is evidence of our Strong Commitment to providing the most innovative and stable solutions through proactively responding to changes in the market and project variables.

### ■ Our Goal

Establishing goals and sustainable plans for continuous improvement relating to preventing environmental accidents, injuries and health hazards.

### ■ Responsibility

Corporate responsibility objectives are intergrated into our internal governance system and are closely linked to our business activities.



OHSAS 45001 : 2018

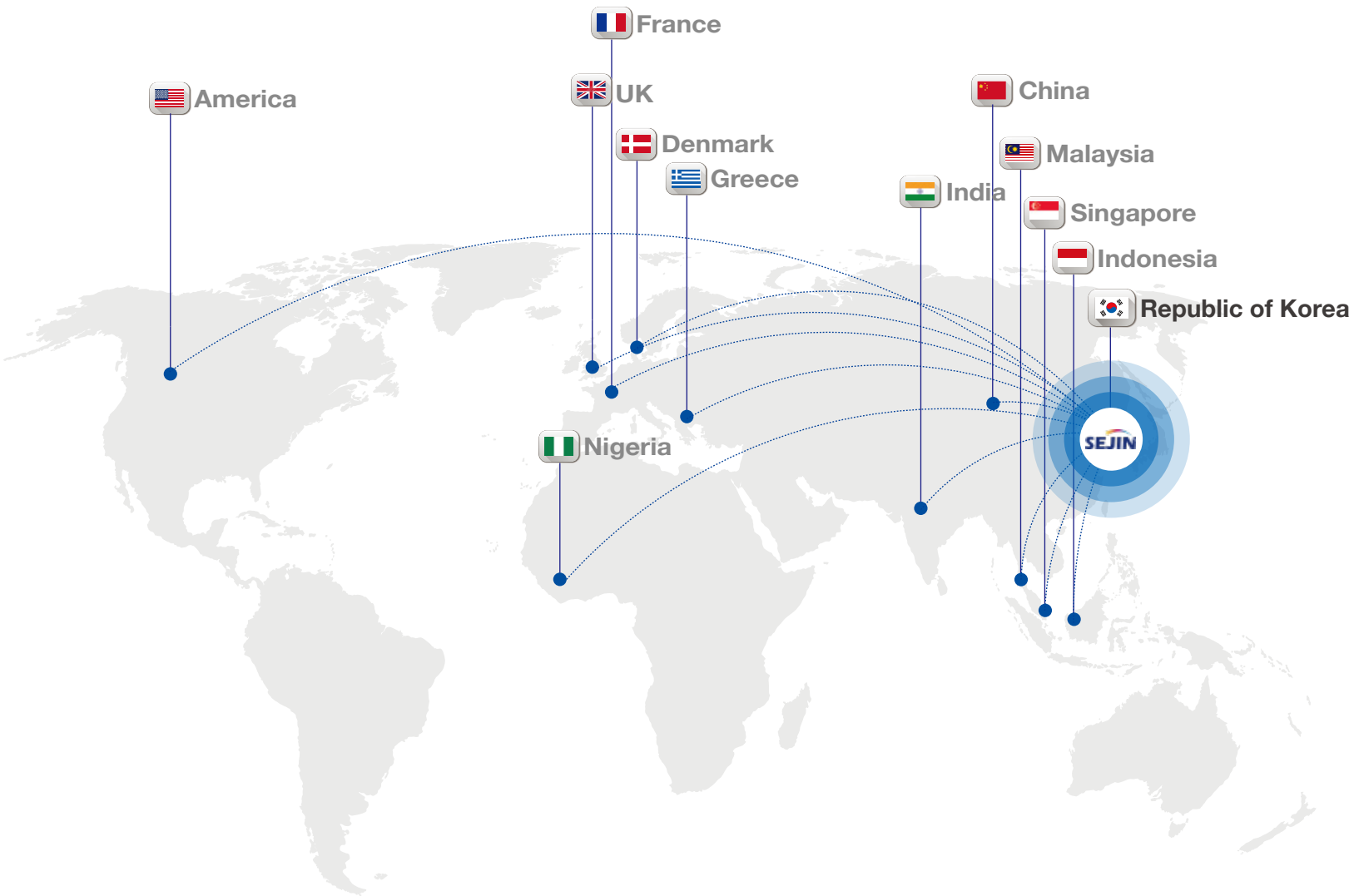


# CONTACT US

## Ideal Locations for Global Marine Business Operation



### Supporting everywhere in the world



■ **Head office / Factory / Warehouse**  
15, Eogokgongdan 5-gil, Yangsan-si, Gyeongnam(50591), Korea.  
Tel. +82-55-782-1180 Fax. +82-55-782-1001  
E-Mail : [marketing@sejintec.co.kr](mailto:marketing@sejintec.co.kr)  
[www.sejintec.co.kr](http://www.sejintec.co.kr)

